

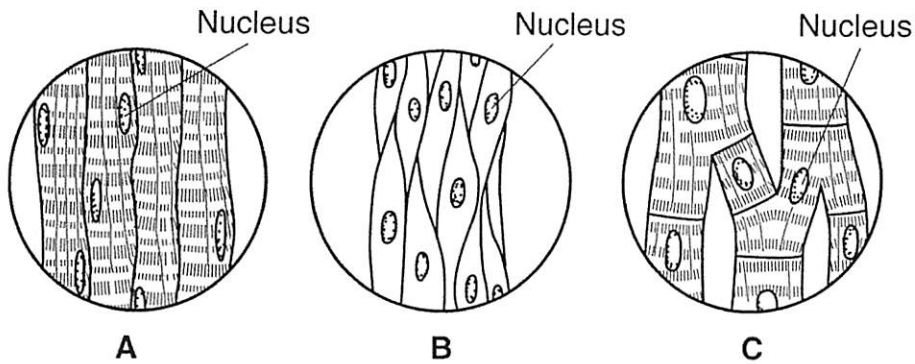
# Weekly Quiz 1

## Integumentary

1. The integumentary system protects the body from infectious organisms and dehydration. What else does it do?
  - a. acts as a touch receptor
  - b. protects the body against abrupt changes in temperature
  - c. helps dispose of wastes (excess salts...)
  - d. stores water, fat, and vitamin D
  - e. all of the above
  
2. What is the *outer part of the skin* called?
  - a. epidermis
  - b. dermis
  - c. follicle
  - d. melanin
  - e. epiglottis
  
3. What is the *inner part of the skin* called? It is relatively thick, and consists of connective tissue, nerve endings, sensory receptors, capillaries, and elastic fibers.
  - a. epidermis
  - b. dermis
  - c. follicle
  - d. melanin
  - e. epiglottis
  
4. The melanocytes secrete what *skin pigment protein* that makes the skin darker (tanned) in order to better protect it from harmful UV rays from the sun?
  - a. melanin
  - b. bacon
  - c. leather
  - d. coppertone
  - e. lymphocytics

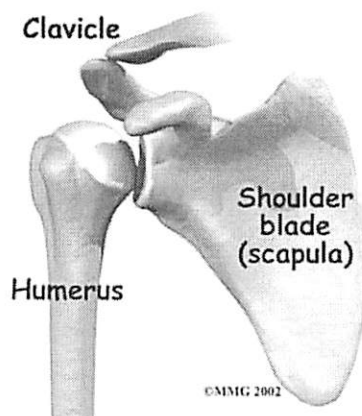
# Weekly Quiz 2

## Skeletal and Muscular



Use the picture above for questions 1-3.

- Which of the muscle cells above acts involuntarily?
  - A and B
  - B and C
  - A and C
  - None of the above
- Which of the following cells above can be found in the heart?
  - A
  - B
  - C
  - Both A and C
- Which of the following muscle cells above is responsible for helping you to move your body?
  - A
  - B
  - C
  - Both A and C



- Which type of skeletal joint is represented in the picture above?
  - ball and socket
  - hinge
  - saddle
  - pivot